



**REGIONAL SPECIALISED METEOROLOGICAL CENTRE-TROPICAL CYCLONES, NEW DELHI
TROPICAL WEATHER OUTLOOK**

DEMS-RSMC SPECIAL TROPICAL CYCLONES NEW DELHI DATED 17.04.2022

TROPICAL WEATHER OUTLOOK FOR NORTH INDIAN OCEAN (THE BAY OF BENGAL AND ARABIAN SEA) VALID FOR NEXT 120 HOURS ISSUED AT 0600 UTC OF 17.04.2022 BASED ON 0300 UTC OF 17.04.2022.

BAY OF BENGAL:

A CYCLONIC CIRCULATION LIES OVER WESTCENTRAL ADJOINING SOUTHWEST BAY OF BENGAL OFF NORTH TAMILNADU ,SOUTH ANDHRA PRADESH COAST .IT EXTENDS BETWEEN 1.5 KM & 3.6 KM ABOVE MEAN SEA LEVEL .

SCATTERED LOW AND MEDIUM CLOUDS WITH EMBEDDED MODERATE TO INTENSE CONVECTION OVER SOUTHWEST BAY OF BENGAL OFF TAMILNADU COAST AND SOUTHEAST BAY OF BENGAL. SCATTERED LOW AND MEDIUM CLOUDS WITH EMBEDDED WEAK TO MODERATE CONVECTION OVER WESTCENTRAL BAY OF BENGAL.

PROBABILITY OF CYCLOGENESIS (FORMATION OF DEPRESSION) DURING NEXT 120 HRS:

24 HOURS	24-48 HOURS	48-72 HOURS	72-96 HOURS	96-120 HOURS
NIL	NIL	NIL	NIL	NIL

ARABIAN SEA:

YESTERDAY'S CYCLONIC CIRCULATION OVER LAKSHADWEEP AREA & ADJOINING SOUTHEAST ARABIAN NOW LIES OVER CENTRAL PARTS OF SOUTH ARABIAN SEA. IT EXTENDS UPTO 4.5 KM ABOVE MEAN SEA LEVEL .

SCATTERED LOW AND MEDIUM CLOUDS WITH EMBEDDED WEAK TO MODERATE CONVECTION OVER SOUTHEAST ADJOINING SOUTHCENTRAL ARABIAN SEA AND COMORIN AREA.

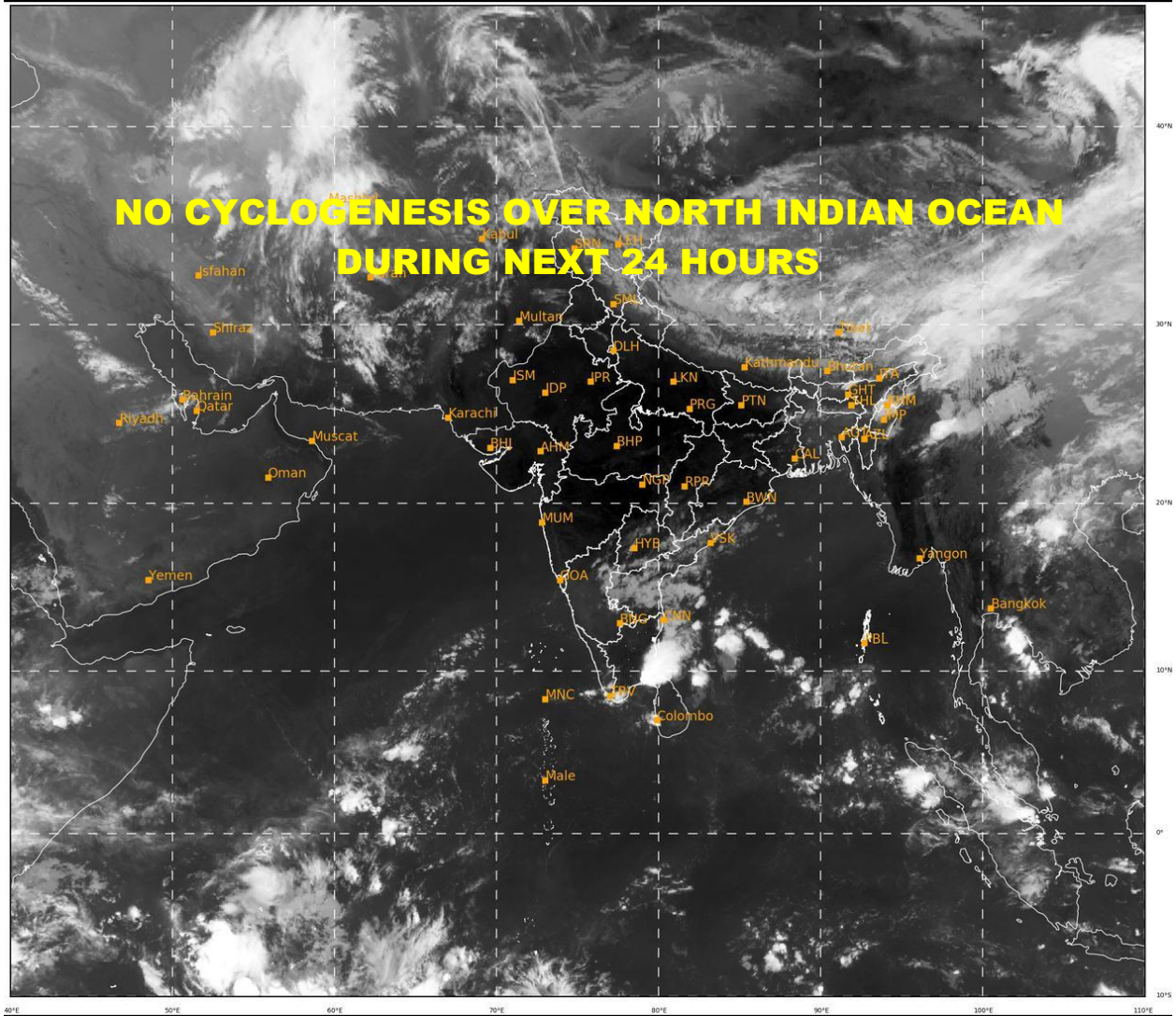
PROBABILITY OF CYCLOGENESIS (FORMATION OF DEPRESSION) DURING NEXT 120 HRS:

24 HOURS	24-48 HOURS	48-72 HOURS	72-96 HOURS	96-120 HOURS
NIL	NIL	NIL	NIL	NIL

REMARKS: NIL

SAT : INSAT-3D IMG
IMG_TIR1 10.8 um
LIC Mercator

17-04-2022/(0300 to 0326) GMT
17-04-2022/(0830 to 0856) IST



419

934

IMD, DELHI

PROBABILITY OF CYCLOGENESIS (FORMATION OF DEPRESSION): NIL: 0%, LOW: 1-33%, MODERATE: 34-66% AND HIGH: 67-100% This is a guidance Bulletin for the WMO/ESCAP Panel Member countries,. Please visit respective National websites for Country specific Bulletins